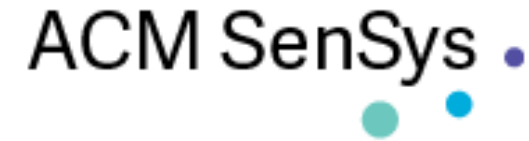




WILLIAM & MARY

CHARTERED 1693



# Simulating COVID-19 Containment Measures Using the South Korean Patient Data

---

Lishan Yang, Anna Schmedding, **Riccardo Pincioli**, and Evgenia Smirni  
William & Mary

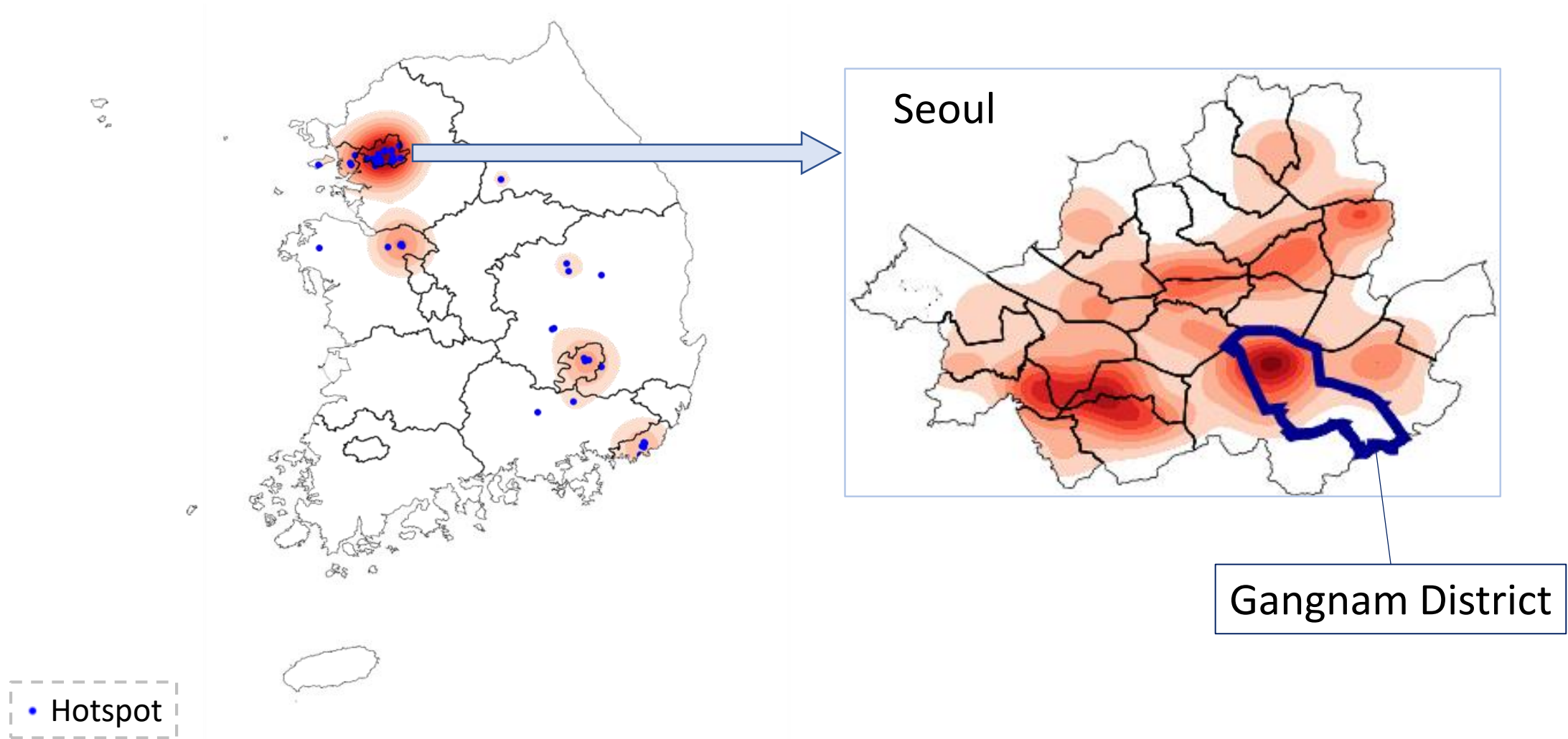
lyang11@email.wm.edu

SenSys 2020  
COVID-19 Pandemic Research Session  
(Poster Abstract)

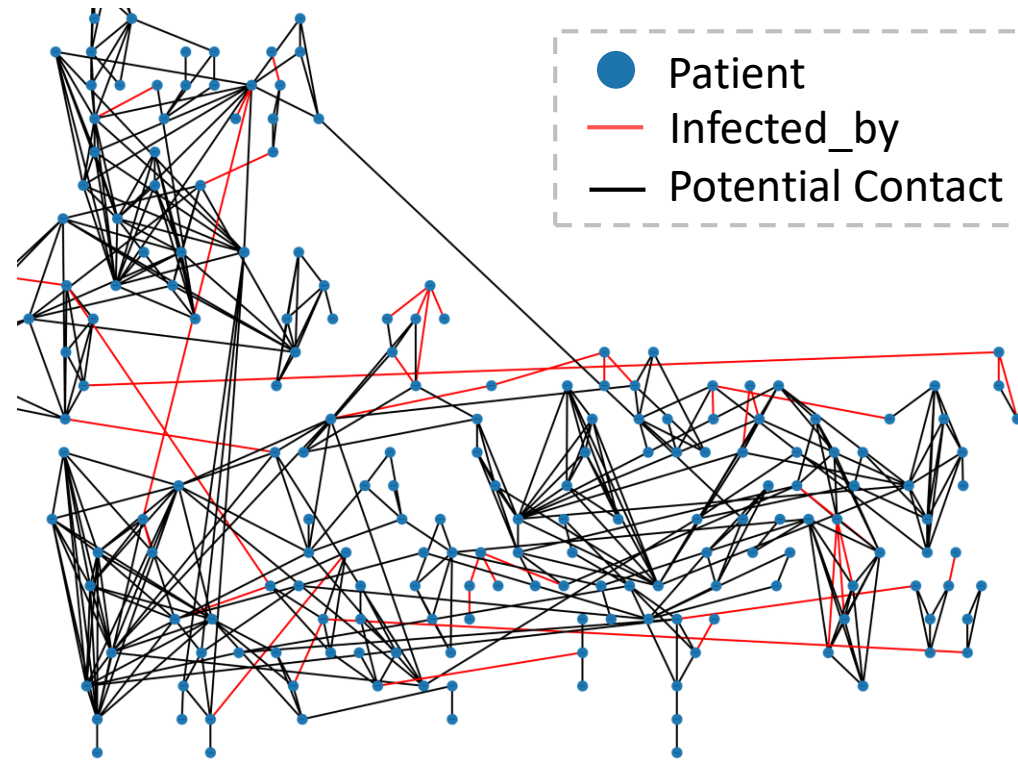
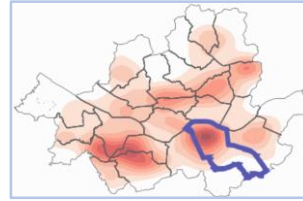
# Data Sets

- Collected by KCDC (Korea Centers for Disease Control & Prevention)
- Jan. 20, 2020 – May 31, 2020
- **PatientInfo** data set
  - 4004 patients
  - patient\_id, provenance (country, province, city), infected\_by, ...
- **PatientRoute** data set
  - 8092 entries
  - location, date, patient\_id, location\_type, ...

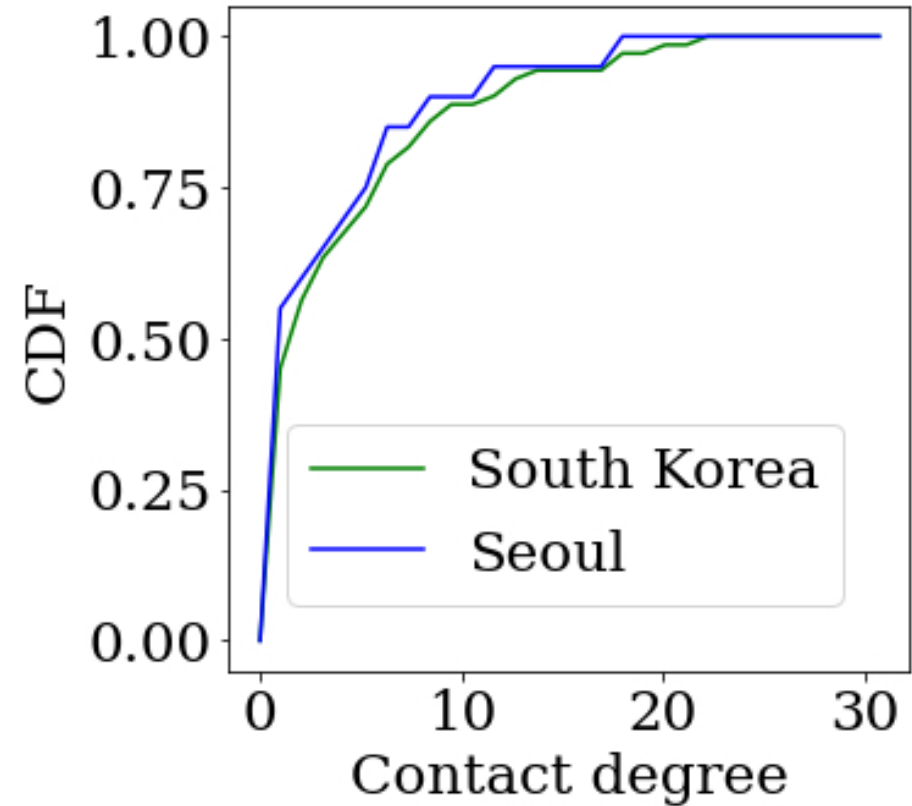
- **Most visited locations**



- Most visited locations
- **Patient contacts**

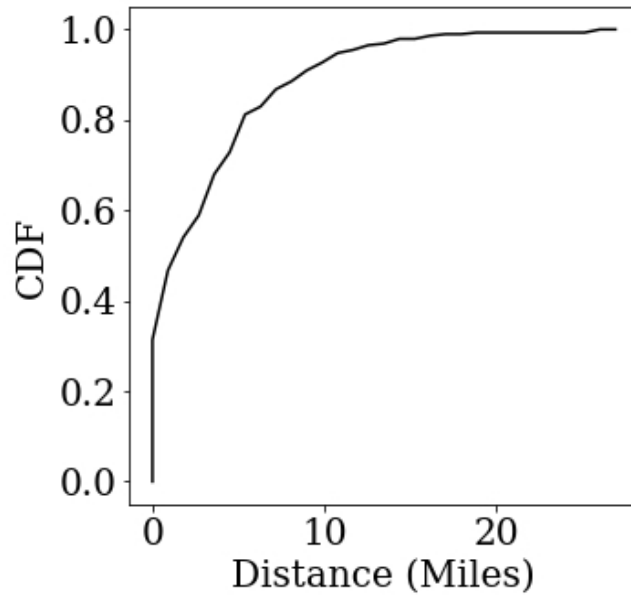
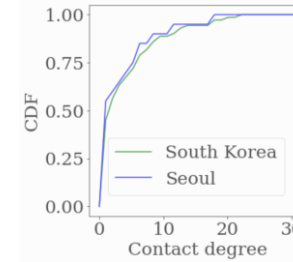
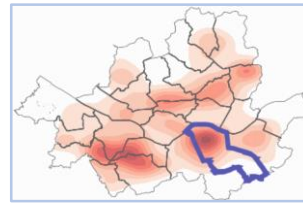


▲ Patient connections (Partial)



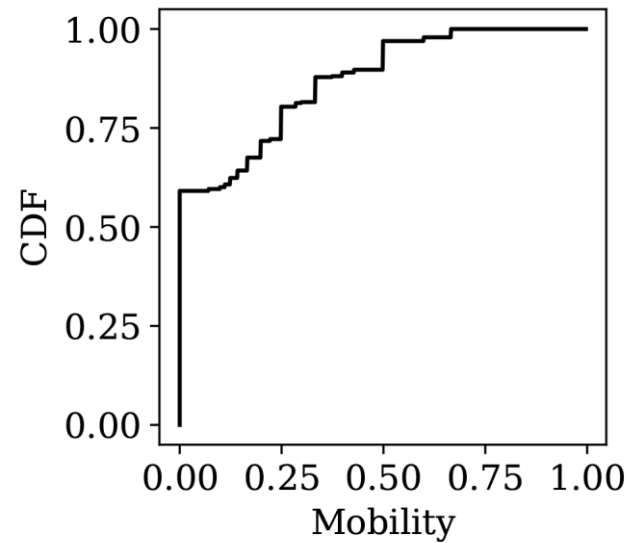
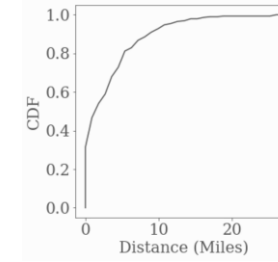
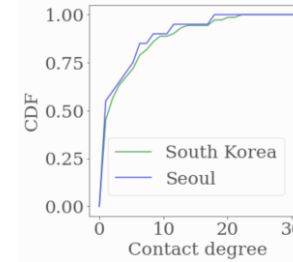
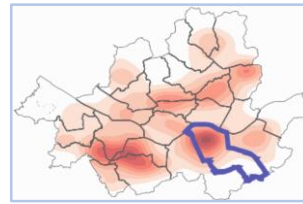
▲ Contact degree CDF

- Most visited locations
- Patient contacts
- **Daily traveled distance**



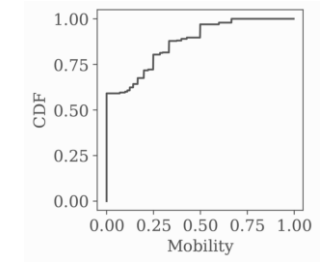
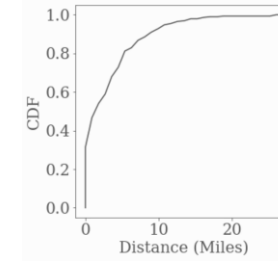
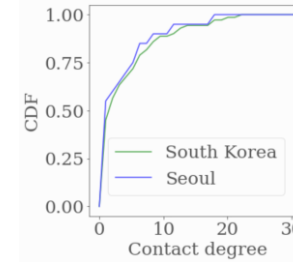
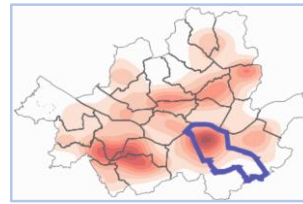
▲ Distance CDF

- Most visited locations
- Patient contacts
- Daily traveled distance
- **Mobility**



▲ Mobility CDF

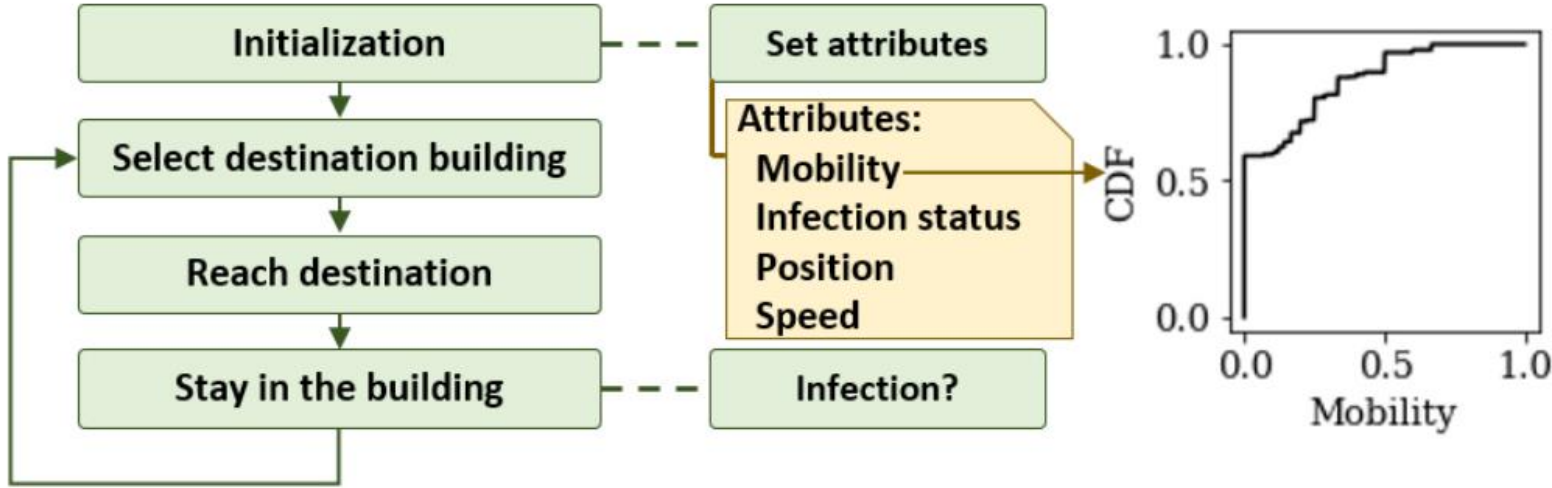
- Most visited locations
- Patient contacts
- Daily traveled distance
- Mobility



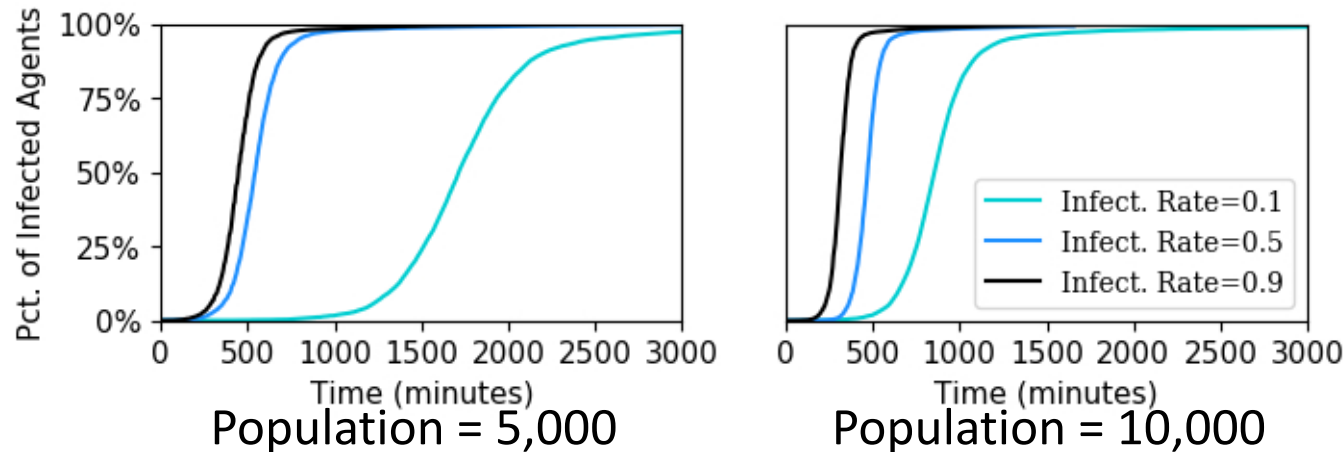
How to parameterize the simulation?

# Simulation (GeoMason<sup>[1]</sup> Tool)

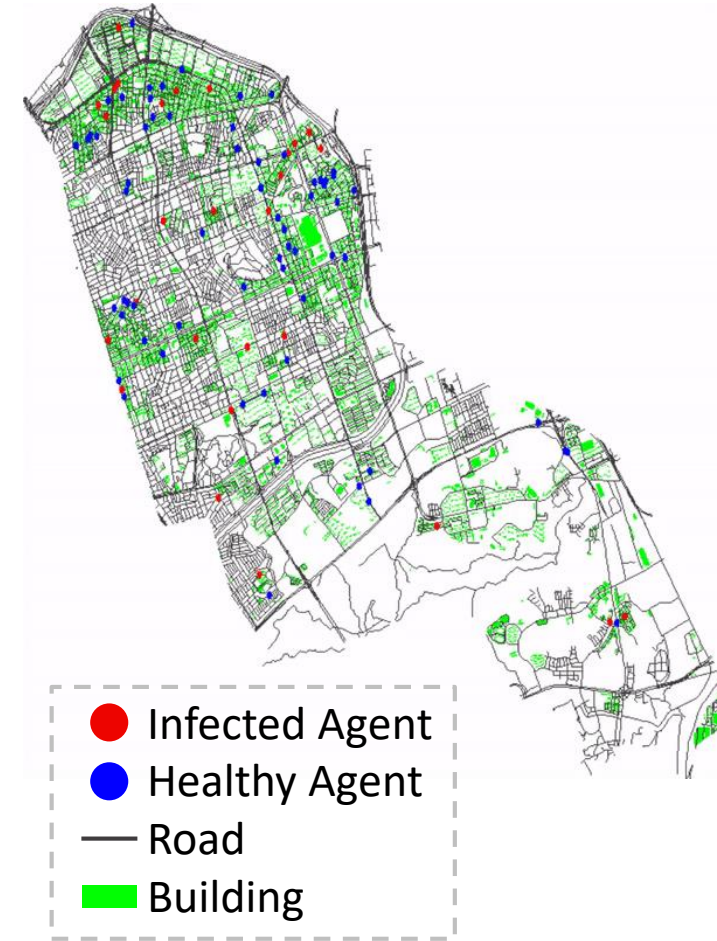
## ▼ Agent life cycle



## ▼ Preliminary results



## ▼ Simulation (Gangnam District)



[1] Keith Sullivan, Mark Coletti, and Sean Luke. 2010. *GeoMason: Geospatial support for MASON*. Technical Report. Department of Computer Science, George Mason University